

Color Contrast in PowerPoint

Addressing color contrast is essential for making text easy to read for those with low vision, poor eyesight or color blindness.

How to check color contrast:

1. Do a visual inspection
2. Use the Accessibility Checker (Tools> Check Accessibility)
3. Use a third-party tool ([TPGi](#))

WCAG (Web Content Accessibility Guidelines) is a global collaboration on technical standards to make the web more accessible to everyone, everywhere. WCAG provides guidance on the minimum level of contrast between the color values of text and its background.

- For normal-sized text(12pt) aim for a 4.5:1 contrast. Which means the lighter color is 4.5 times brighter than the darker color.
- White text on a black background or vice versa has a 21:1 ratio. Making these combinations the most accessible choice.
- Be sure to keep your PowerPoint Presentation font size 28pt or higher. Since it is a large-sized text (14pt bold or 18pt regular) use a 3:1 ratio.

Use CU Denver Powerpoint Templates to ensure your presentation stays on brand and provides you with access to recommended CU Denver color contrast combinations. These combinations pass the color contrast ratios for Normal and Large sized text.

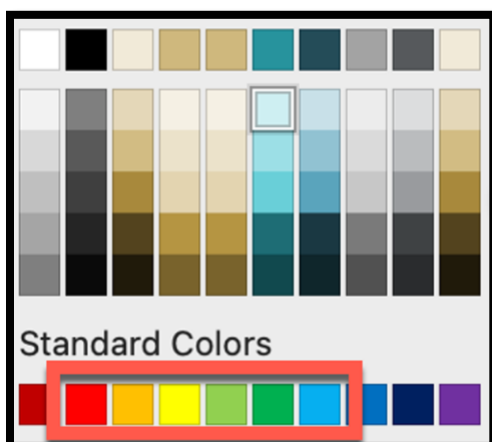


White	Black	White	Black	Black	White
Gold	Dark Grey	Gold	Dark Grey	Black	Gold

Use the Accessible Gold when using white text on CU Gold backgrounds or CU Gold text on White backgrounds, the text must be outlined with Accessible Gold in order to meet accessibility standards.



Avoid using light shades on white backgrounds. Use red, orange, yellow, light green, green, and light blue sparingly on dark backgrounds.





Division for Teaching Innovation
and Program Strategy

UNIVERSITY OF COLORADO **DENVER**